

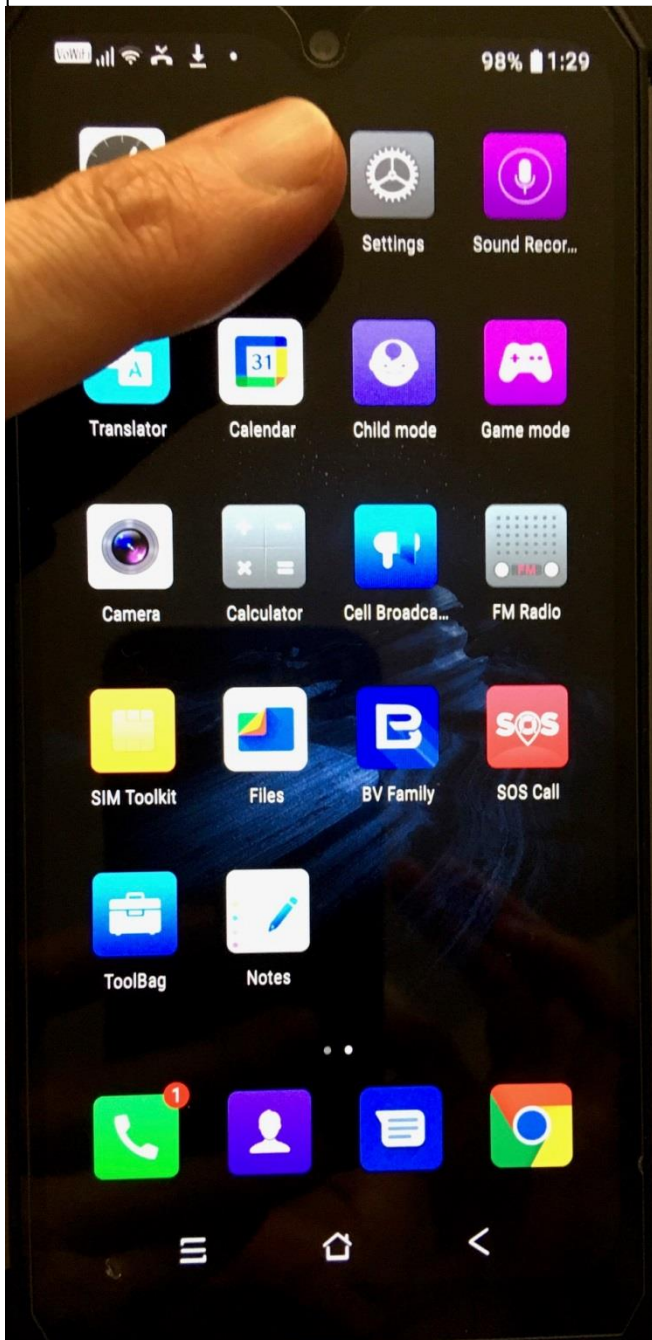


## Email address set-up on your device

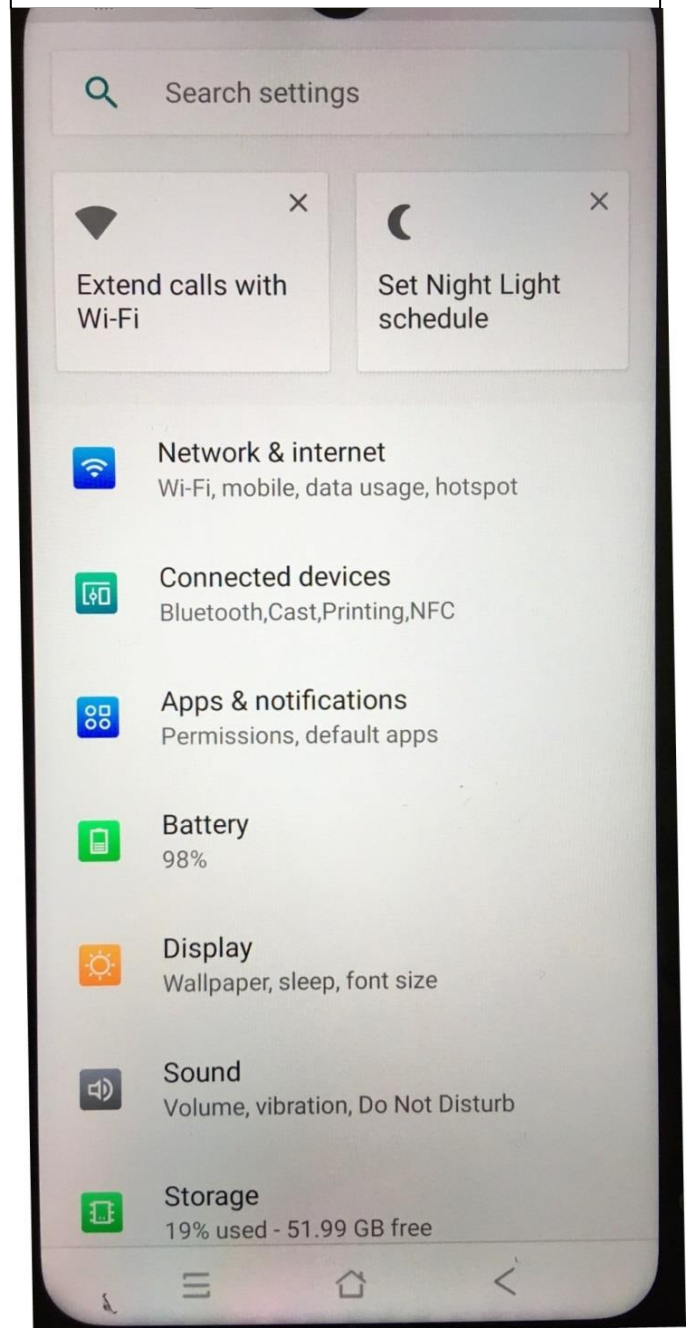


SOLEX

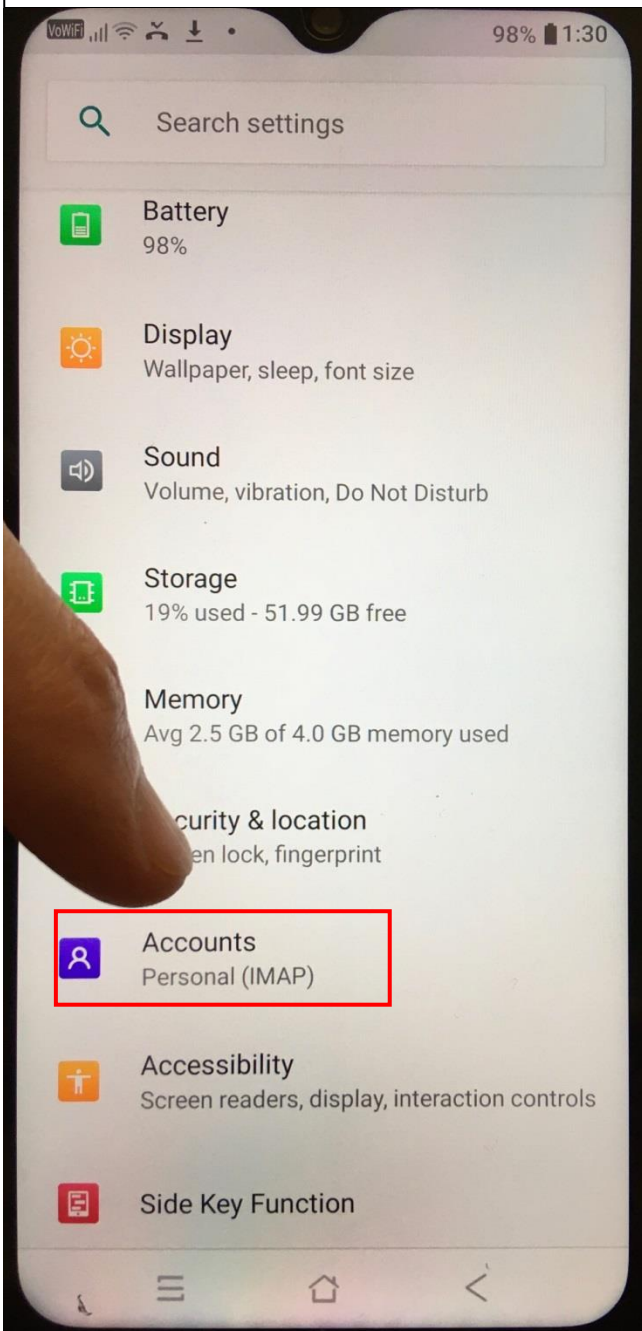
Once your phone is ON, from page 1 or 2,  
find **settings** as shown below



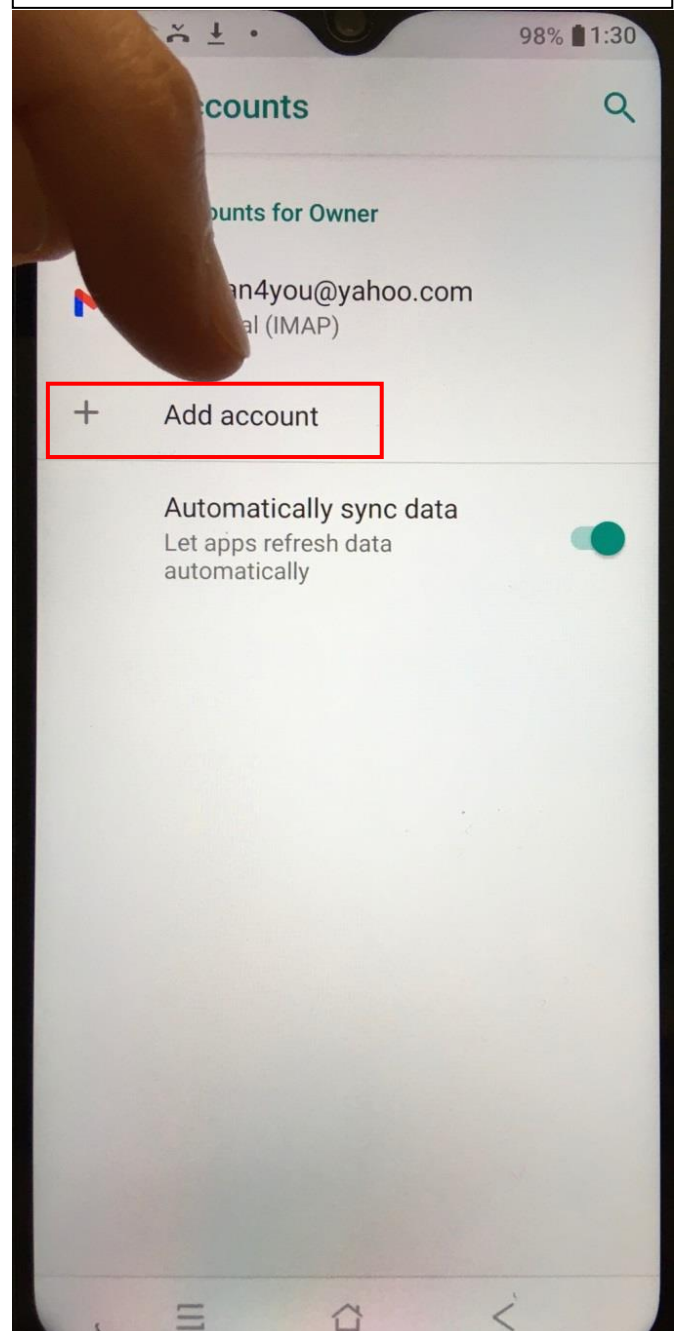
Go to settings ...**scroll down to Accounts**



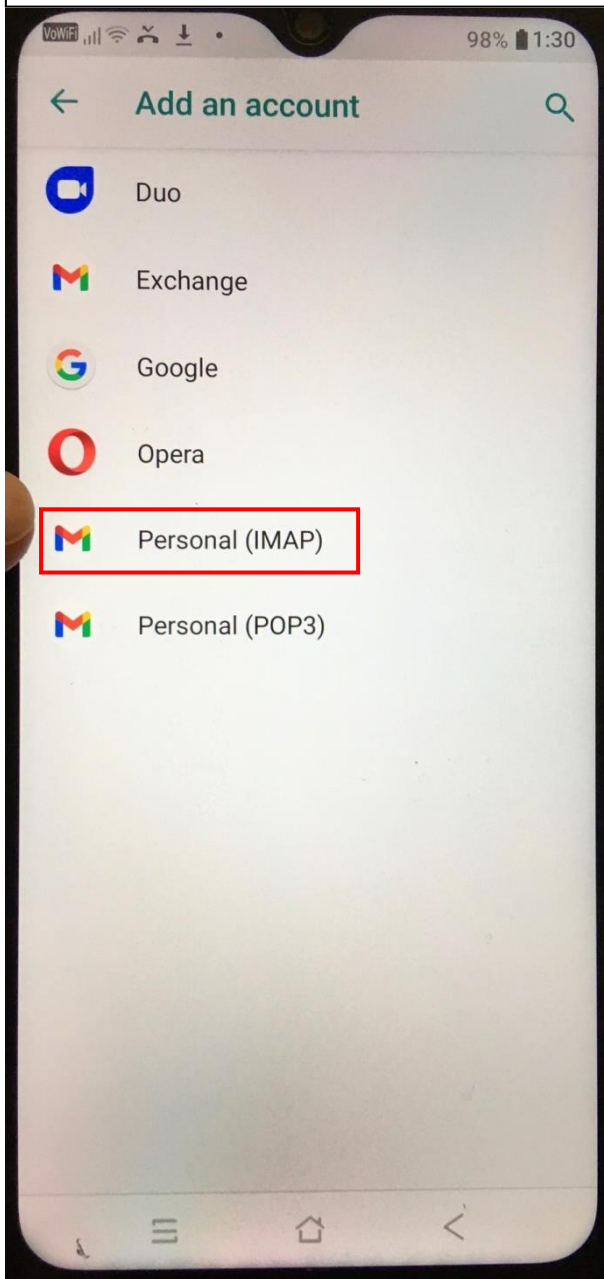
Great! Click on **Accounts**



Click on **+ Add account**

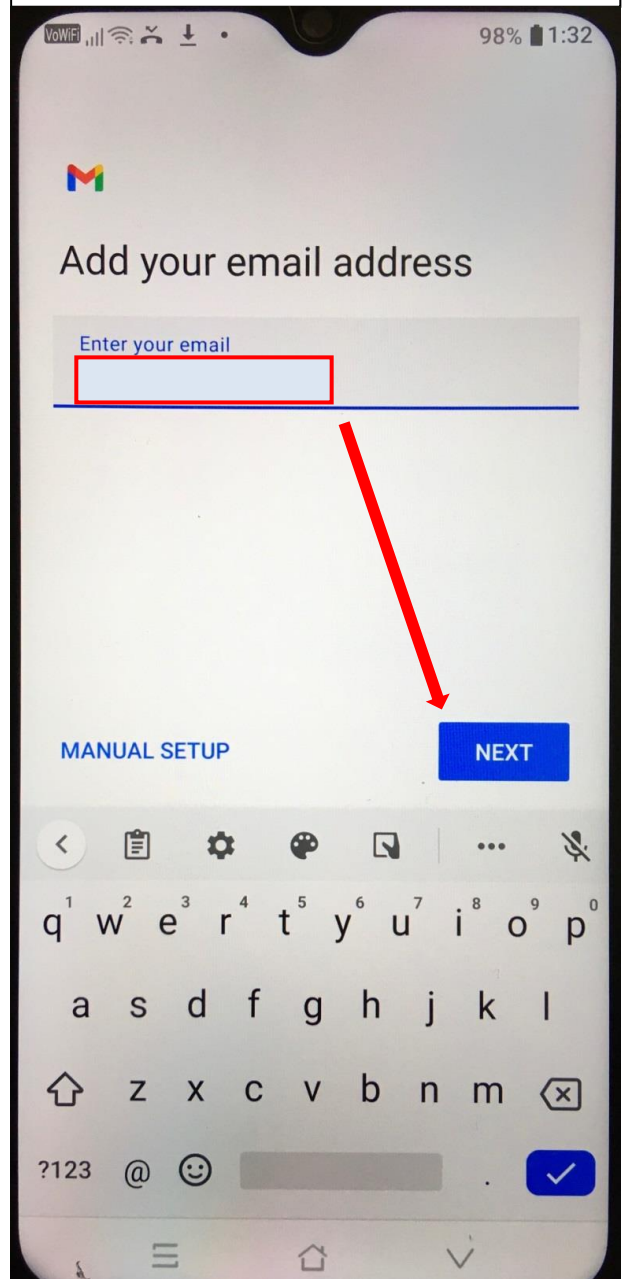


Click on **Personal (IMAP)**

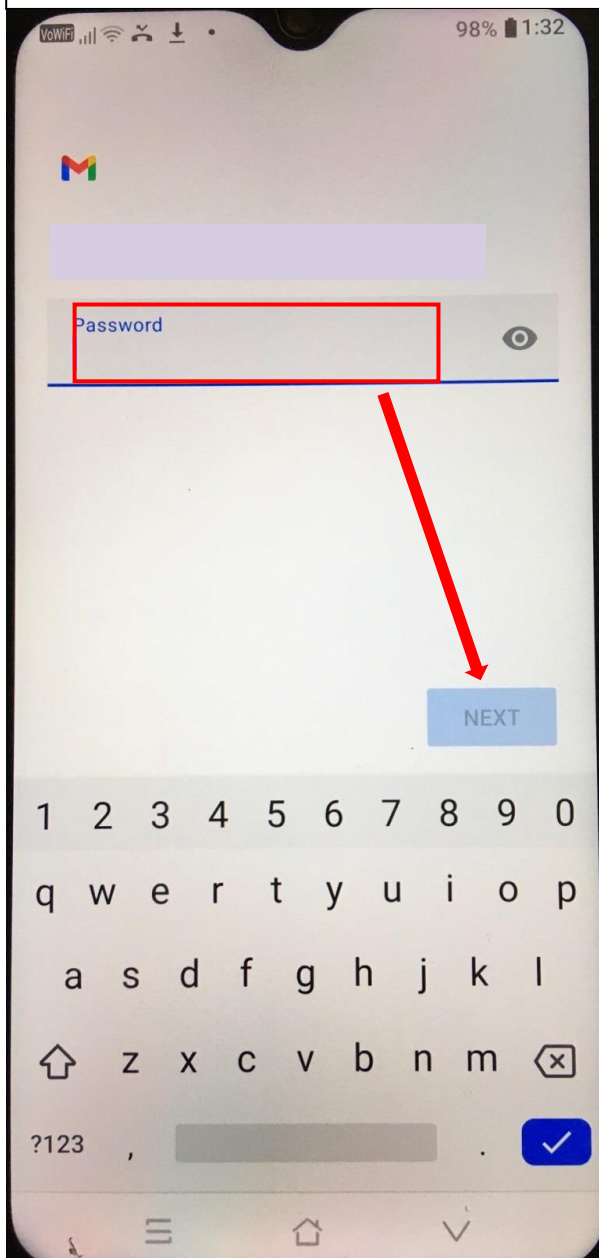


Enter your **email address**.

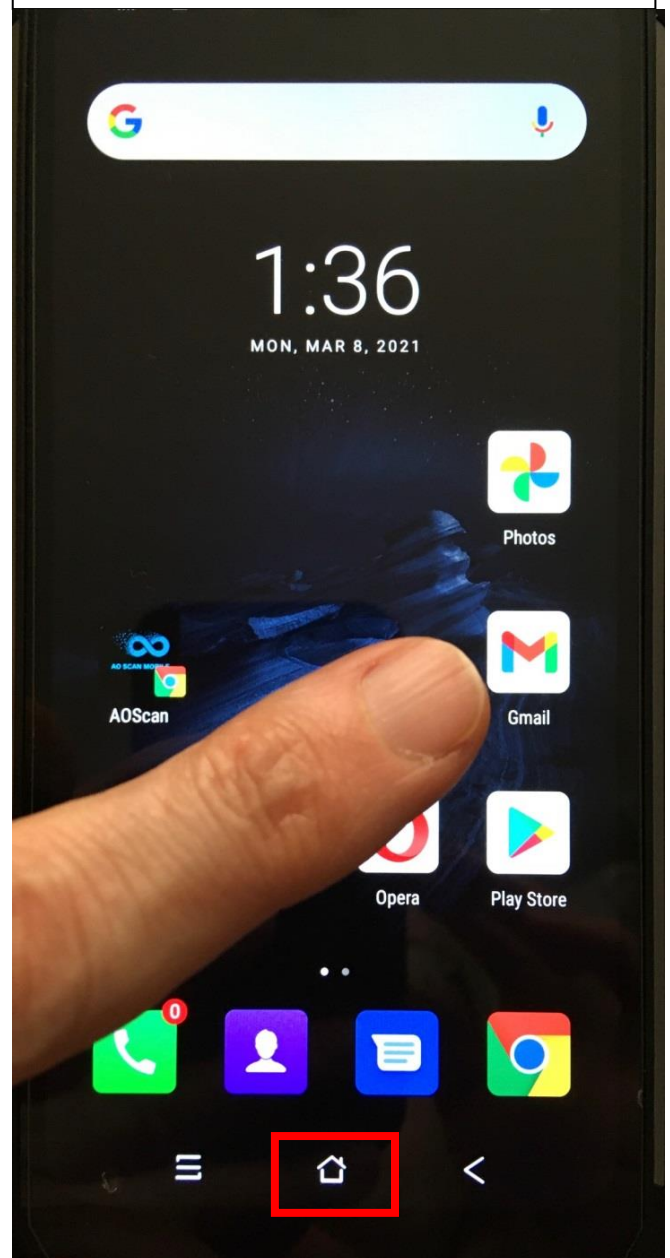
Then **click on next**.



Fill in **Password** associated with your email. **Click next**. **Wait for it to finish**.



Return to **homepage** by clicking the 'house'.  
Retrieve **emails** from the Gmail icon OR  
**Photos** from the Photo icon.



The advantage of having your email on the phone is to download the photo emailed by the client. It is then easy to upload onto the client profile PRIOR to the session.

Concerning remote sessions, it is easier to access the photo this way than attempting to take the photo while doing a face-time or zoom call.