

Our pets have biological similarities as we do!

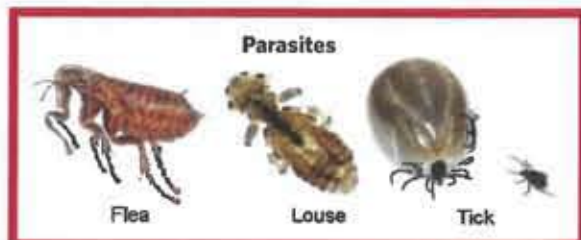
All living things, large or small, plant or animal, are made up of cells. Most living things are made up of one cell and they are called unicellular organisms. Many other living things are made up of a large number of cells that form a larger plant or animal. These living things are known as multicellular organisms.

The idea that energy fields influence physical development is beginning to gain acceptance in the medical community. The increasing number of studies in this field confirms this. In the early 20th century, Professor Harold Saxton Burr and Dr. Leonard Ravitz from Yale University's School of Medicine published numerous reports describing the biofields of energy surrounding every living creature.

PetZone, is a division of AlphaBio Centrix, where we study the effects of the human and animal electrical

system by using Bio Energy Synthesis Technology. This technology offers our team of engineers and doctors an insight into the bioelectrical nature of cells that are known as multicellular organisms. All living animals including humans have an energy which is generated by chemical processes in nerve cells. Billions of nerve impulses travel throughout the brain and nervous system, resulting in life-force, which is the least understood and most taken for granted.

These products are a drug free solution made for pet owners who understand the danger of using too many drugs. The excessive use of these chemicals are harmful and extremely dangerous to your animals' health.



PetZONE™

FOR PURCHASES

CONTACT

JOCELYNE COLOMBE

NURSE PRACTITIONER

860-830-1115

Drug Free Solutions!

PetZONE™

PROTOCOL AND REFERENCE GUIDE FOR PETS

**An Advanced
Technology using
No-chemicals,
No-drugs Health
Applications for
Pets.**



PetZone Energy Chips is copyright and are intellectual property of Alpha Bio Centrix, R&D. PetZone product is also patent pending.

Advanced Technology - "Bio Energy Synthesis Technology"

No Chemicals or Drugs!

Flea & Tick PROTECTOR

The Flea & Tick Protector works with your animal's bioenergy field that surrounds all living animals.

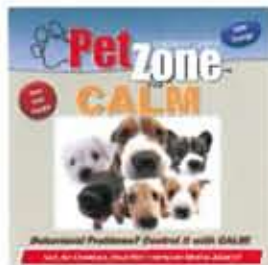
This energy field cannot be seen, but science tells us that all living creatures are not just a physical structure, but like everything else is composed of bioenergy fields that can be measured by various magnetic imaging devices.

What to Expect

Fleas and ticks are natural predators of warm-blooded animals. They will remain there until you can take action and examine. The Flea & Tick Protector is made to improve the animal's immune system and keep them healthy while in that environment. It takes 2-3 weeks to strengthen the animals' immune system thereby improving a healthier barrier against fleas and ticks.

Each package is (one) year supply.

Your pet is an extension of your family, you don't have to poison your pets with chemicals. Our products effectively raise your pet's immune system to cope with anxiety issues and protect them from fleas and ticks using natural Bioenergy.



CALM

The Calm is specifically made to combat depression by balancing the dog's behavior, and also helps work to beat back a wide variety of secondary symptoms. This product is safe for all animals.

Each package is (one) year supply.

Your pet is an extension of your family, you don't have to poison your pets with chemicals. Our products effectively raise your pet's immune system to cope with anxiety issues and protect them from fleas and ticks using natural Bioenergy.

How it's programmed:

The process in which the disk is programmed is by generating a frequency program ranging from 30 MHz to 130 MHz, a special Accelerator Frequency Generator, (AFG) applies a voltage ranging from 1 volt to 3 volts between coils in a containment field that produce waves of frequencies. These volts of energy cause the material to hold the frequencies to be suspended for up to a two year shelf-life.

The disk is made from a material that contains carbon, crystalline elements, which is embedded into a substrate material and then domed for environmental protection.

Parasite INHIBITOR

Hookworms, tapeworms, and whipworm: All kinds of worms can invade your pet's intestinal tract and can cause diarrhea, vomiting or weight loss, but they can also be present in your pet's body without any symptoms. Heartworms can inhabit your pet's blood stream and heart and may eventually affect many different organs but your pet may initially be asymptomatic.

Heartworm infection is almost always preventable with medication. However, if a blood test confirms that your pet has heartworm, your veterinarian can advise you about treatment options.

Coccidia: The more common form affects the intestines and can cause weight loss, watery or mucous-like diarrhea and dehydration- or your dog may not show any signs of infection. One rare form of coccidia affects the liver and can cause appetite loss, diarrhea, liver failure or in severe cases, death.

Cryptosporidium: This intestinal parasite is usually ingested through contaminated food, water or feces. Symptoms include fever and diarrhea and, possibly, lethargy.

The Parasite Inhibitor guards against internal parasites by Bio Energy Synthesis Technology, a programmed process that emits frequency energy from the material that enhances the animal's immune system to stop parasitic infections. (This chip can be attached to the animal's water or food bowl, as well as the pet's collar).



REJUVENATOR

Just like humans when you awaken each morning fully rejuvenated, our pets do the same. But what if sleeping is haphazard and offers little deep relaxation! Premature aging will result for both you and your pet.

One of the keys to a happier life for your pet is the ability to rest soundly for approximately six to eight hours a night. During this period of sleep, the animal's body repairs itself both physiologically and psychologically.

Your pet needs melatonin that brings on sleep within five to six minutes. Up until a decade or so ago, health researchers and medical practitioners believed that the pineal gland, a tiny endocrine gland in the brain, was victim to evolution and served no purpose at all in the human body. Now, doctors know better.

The Rejuvenator 300gs seal for pets are made to be attached to the bottom of your pet's bed. These seals are safe and are programmed with specific frequencies that produce healing energy and support your pet's cell reproduction while your pet sleeps.

Allergy RELIEF

Allergies can present a variety of symptoms, but in the dog, the most common symptoms occur as skin irritations: itching, scratching, digging, and gnawing at the skin, often to the point of creating open raw wounds over large areas of the body. Chronic ear infections are another common symptom. Occasionally dogs will have respiratory symptoms such as coughing, sneezing, or a nasal or ocular discharge. Food allergies may produce, in addition to skin irritations, vomiting and/or diarrhea. Symptoms can extend to include epileptiform seizures, and many holistic vets feel that allergies can ultimately result in chronic diseases



such as arthritis, asthma, chronic urinary tract infections, inflammatory bowel disease, etc.

Interestingly, whereas dogs typically have itchy skin symptoms, a human allergic response usually produces respiratory symptoms. An estimated 10 percent of the human population may be allergic to animals (the rate for being allergic to cats is about twice as high as for dogs); a higher rate of 20 to 30 percent of individuals with asthma have pet allergies. In a nutshell, allergy is the result of an immune system that has, for one reason or another, turned against the self. Sometimes, this reaction seems instantaneous, as when a dog receives a food that contains something to which he is allergic, and he breaks out almost immediately with rashy itchy skin.

Pain & Joint RELIEF

Dogs' joints take a pounding, from running after tennis balls to jumping off the back deck. And for some dogs, that's a problem. More use means more injuries and can lead to joint-related problems such as ACL (anterior cruciate ligament) tears and osteoarthritis.

The two major categories of joint problems are developmental and degenerative problems. With developmental problems, you have things like hip or elbow dysplasia, where the joint does not develop correctly in a number of different ways.

Degenerative problems cover a number of areas. But the most common, and the most common cause of arthritis in dogs, is cruciate ligament problems, where the ligament is degenerating over time and causing instability and secondary osteoarthritis.

Most of the time, people notice that their dogs are doing less or having more difficulty with common activities. The dog now has problems getting up on the couch, or going up the stairs, or getting in the back of the SUV. With more athletic dogs, maybe they can't run as long with their owner, or they don't want to play as long at the dog park.

Those are the most common things we see. Rarely do we see overt pain as the first complaint. By using the Pain & Joint Relief on a regular bases, your pet will receive subtle energy from the chip, thereby receiving pain and joint relief.

